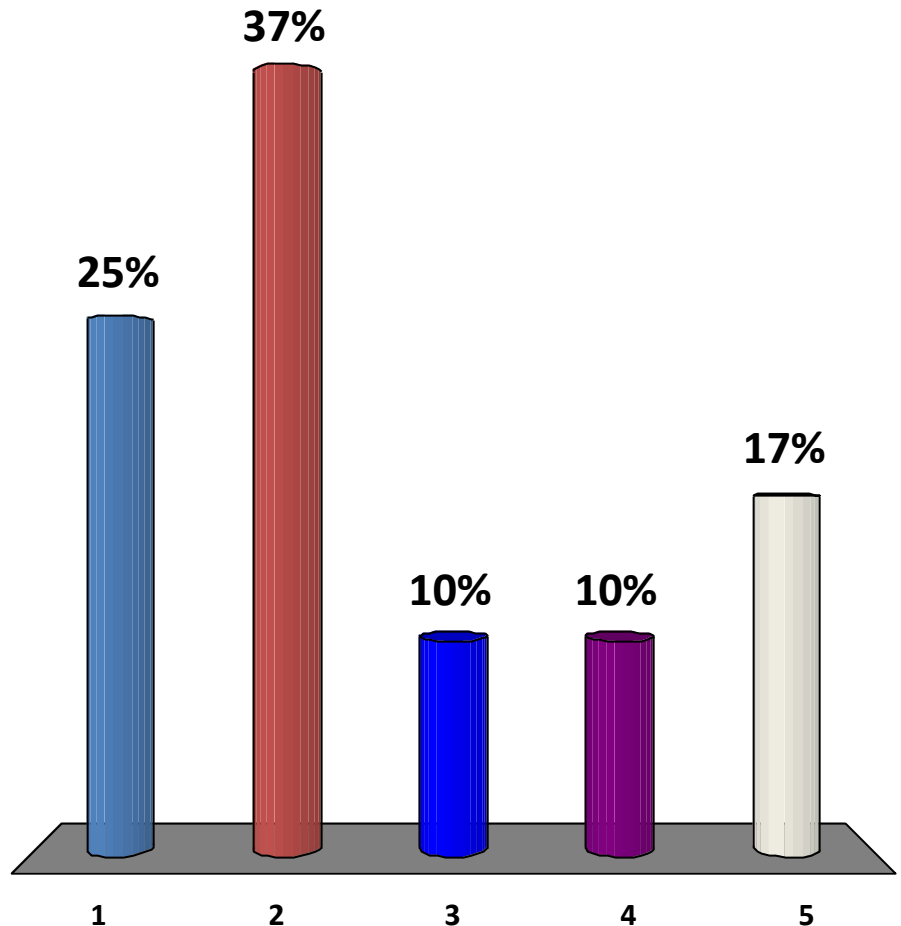


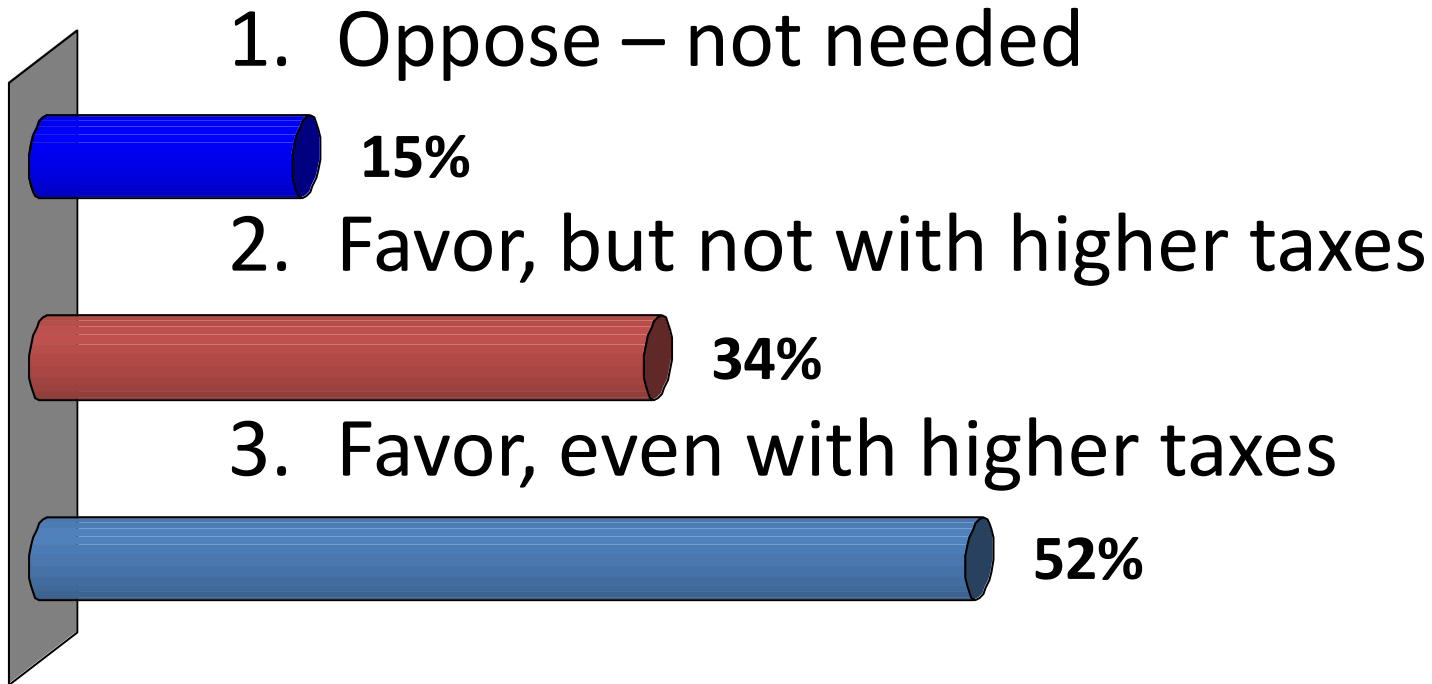
MASTER PLAN SURVEY QUESTIONS

Do you favor or oppose mixed-use development with both residential and commercial uses in the same building?

1. Strongly favor
2. Somewhat favor
3. No opinion
4. Somewhat oppose
5. Strongly oppose



Do you favor or oppose purchasing farmlands, forests, and open space for conservation?

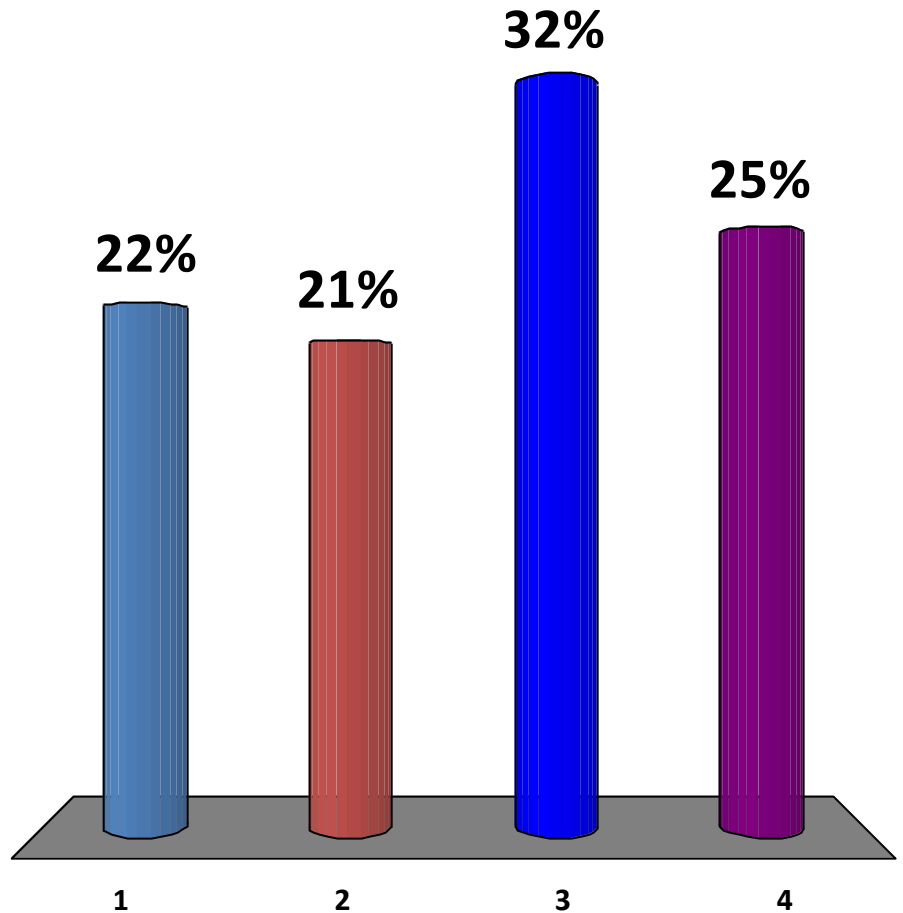


Are you satisfied or dissatisfied with the amount of recreational facilities such as parks, playgrounds, and ballfields?



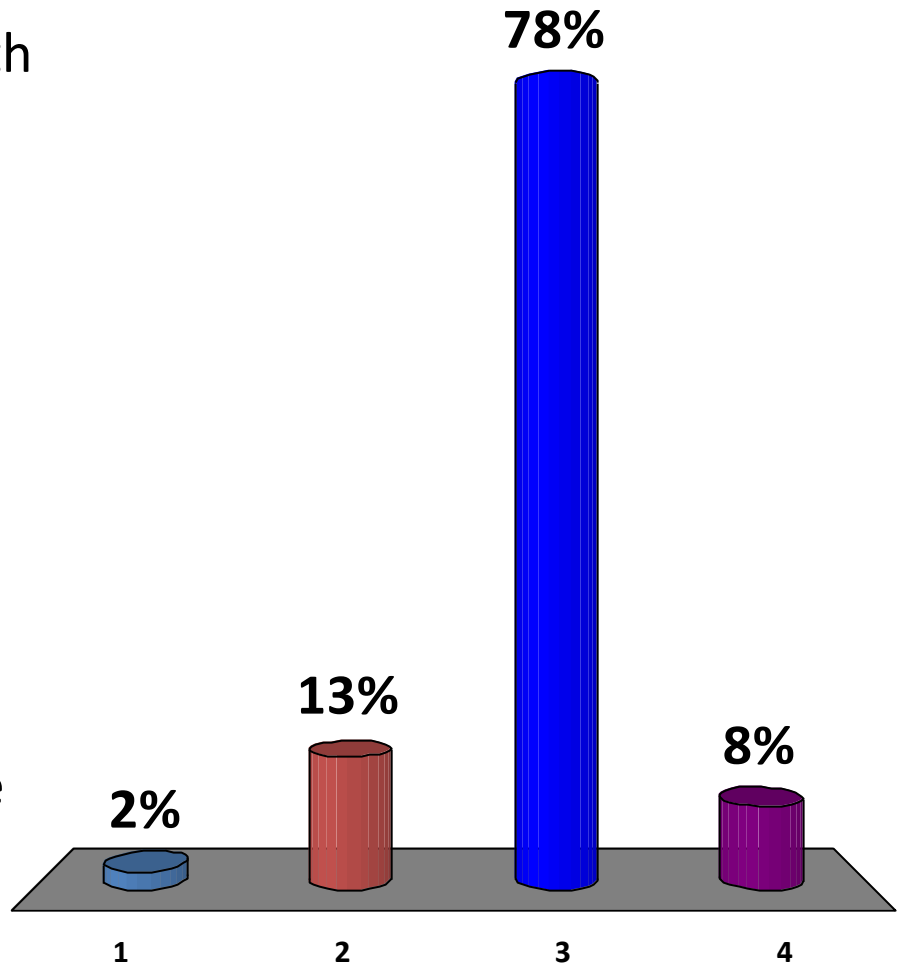
What would you like to see happen to the Rt. 15 corridor?

1. Leave it as is
2. Allow limited development in designated areas
3. Allow small scale commercial development
4. Allow large-scale commercial development

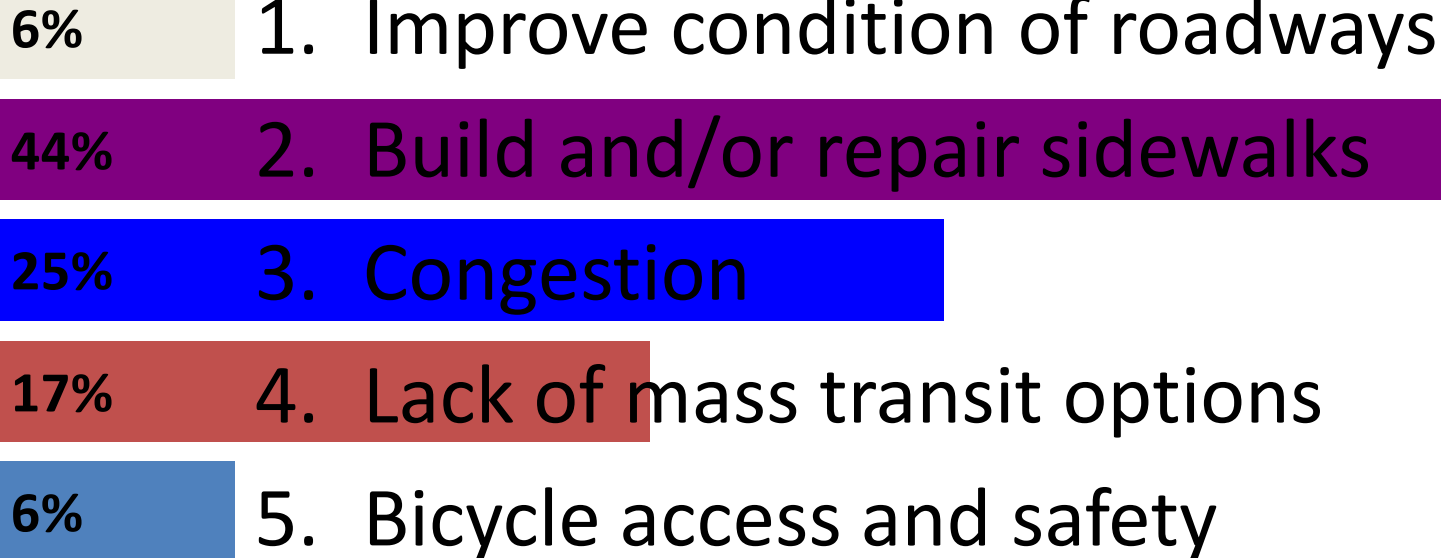


What would you like to see happen to the Commercial-Tourist District on Rt. 20?

1. No changes are needed at this time
2. Pedestrian-friendly with commercial uses that serve local needs, but not tourism-based businesses
3. Pedestrian-friendly setting with tourism-based businesses
4. Encourage commercial development without hampering automobile travel



What is the most pressing transportation need?

- 
- A horizontal bar chart with five bars of different colors, each representing a transportation need and its percentage. The bars are ordered from top to bottom: 1. Improve condition of roadways (6%, light beige), 2. Build and/or repair sidewalks (44%, purple), 3. Congestion (25%, blue), 4. Lack of mass transit options (17%, reddish-brown), and 5. Bicycle access and safety (6%, blue-grey). The percentage values are displayed to the left of each bar.
- | Percentage | Transportation Need |
|------------|----------------------------------|
| 6% | 1. Improve condition of roadways |
| 44% | 2. Build and/or repair sidewalks |
| 25% | 3. Congestion |
| 17% | 4. Lack of mass transit options |
| 6% | 5. Bicycle access and safety |
- 6% 1. Improve condition of roadways
 - 44% 2. Build and/or repair sidewalks
 - 25% 3. Congestion
 - 17% 4. Lack of mass transit options
 - 6% 5. Bicycle access and safety